



## 241 Beaver Road

Ashford, TN23 7SJ

Guide Price £160,000

FOR SALE BY PUBLIC AUCTION  
JOINT AUCTIONEERS WITH CLIVE EMSON  
2nd of November 2022

Situated on the southern side of Ashford and within close proximity of the Designer Outlet Centre, international railway station, Ashford College and the town centre beyond, this house is in need of total refurbishment, although has some double glazed windows.

Ground Floor  
Entrance hall, living room, dining room, kitchen, shower room with W.C. and lean-to giving access to the garden.

First Floor  
Landing and three bedrooms.

Outside  
Front forecourt and rear garden.

### Viewing

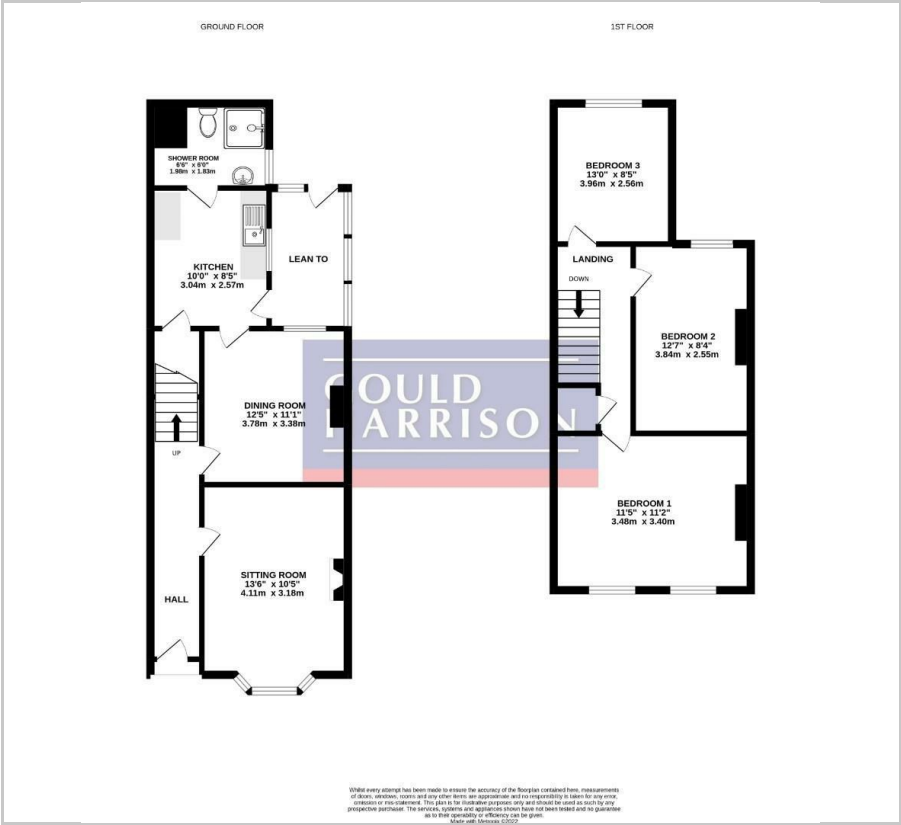
Please contact our Ashford Office on 01233 646411 if you wish to arrange a viewing appointment for this property or require further information.

- FOR SALE BY AUCTION
- SEMI DETACHED HOUSE
- THREE BEDROOMS
- TWO RECEPTION ROOMS
- CLOSE TO STATION
- IN NEED OF MODERNISATION





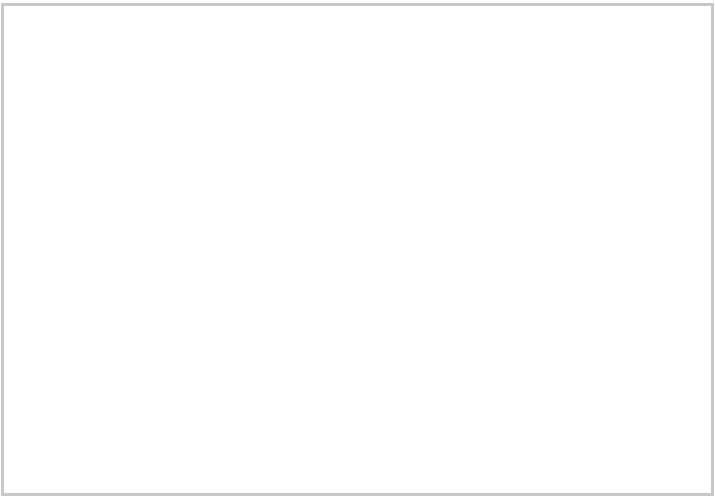
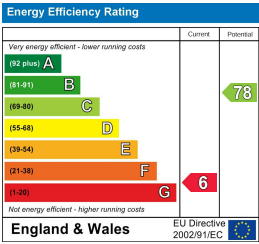
Floor Plan



Area Map



Energy Efficiency Graph



These particulars, whilst believed to be accurate are set out as a general outline only for guidance and do not constitute any part of an offer or contract. Intending purchasers should not rely on them as statements of representation of fact, but must satisfy themselves by inspection or otherwise as to their accuracy. No person in this firm's employment has the authority to make or give any representation or warranty in respect of the property.